

50 Men Blast Proof SIP H2S Protection Shelter



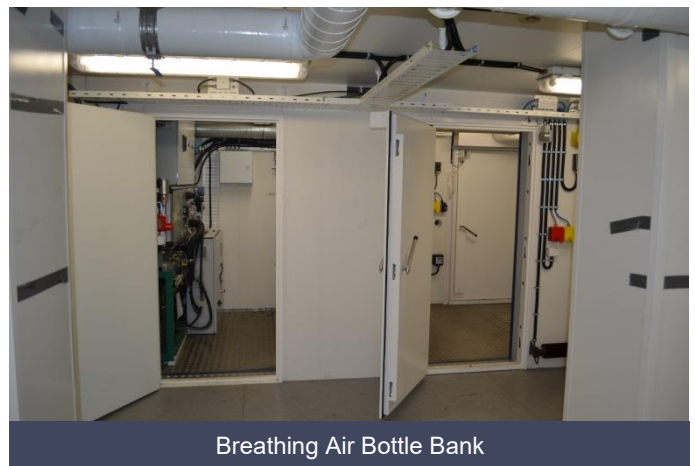
This Uniteam 50-men SIP is GOST-K and SIL-3 certified and is a customized solution built for easy transport and relocation. It is built by 4 standard ISO containers size (2x40' and 2x20') fire rating A-60/J-45 (Jet-fire protected) and blast protected to 200mbar/45msec. The sealing between the containers is solved by Uniteam patented GSSP gaskets which ensures fast deployment of the SIP on site, with minimum downtime of the ongoing production.

With the Breathing Air system with SIL-3 operation and manual override provided by EUREKA, it will protect employees for more than 2 hours during an emergency by overpressure. F&G system with SIL-3 approval HIMA and MIMIC panel will make sure your warnings are informative and correct.

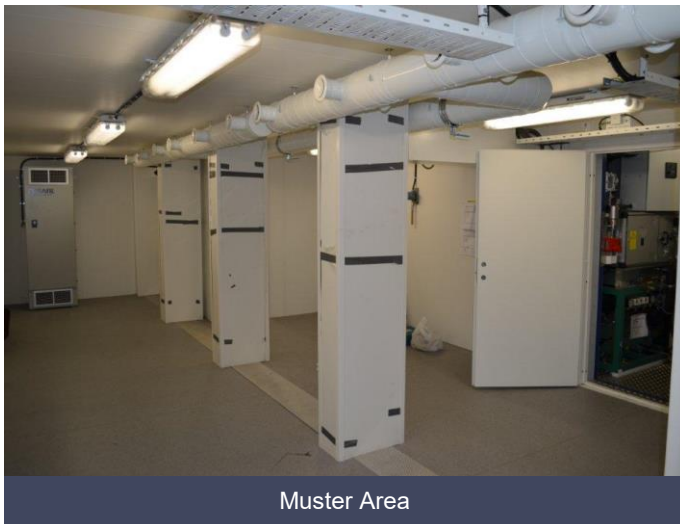
The 2x40ft containers are used as Muster Area (Approx. 50 Sqm). One 20ft Container contains the Breathing Air Bottle Bank, Compressor and PRP Cabinet, while the air-lock and technical control room (including F&G Control Cabinet, Electrical Distribution board and UPS) are located in the other 20ft container. Only power has to be added to unit through the readymade gas-safe MCT-gaskets.



Breathing Air Bottle Bank



Breathing Air Bottle Bank



Muster Area



Chartec 7 (Blast and Jet-fire)

Specification

Structural

2x40' ISO High Cube Muster Area	Size: 12,19 x 2,43 x 2,89 meters [LxWxH]
20' ISO Technical Container and Air-Lock	Size: 6,06 x 2,43 x 2,89 meters [LxWxH]
20' ISO Breathing Air Bottle Bank Container	Size: 6,06 x 2,43 x 2,89 meters [LxWxH]
Operational Temperature	+43°C to -45°C
Insulation	Sprefix-S + 100mm Rockwool K-Value 0,42
Fire rating	A-60 / J-45 (Jet fire protected)
Blast protected	200 mbar / 45msec
Doors	A-60 Heavy duty gas tight
Painting	NORSOK 501, Chartec-7 J-45
Lining	Med-B certified

Electrical

UPS	2 hours for emergency equipment
Cables	Acc. to NEK 600 Offshore and petroleum
ATEX zone approval	1, 2 and safe area

Instrumentation

F&G system	SIL-3 approval HIMA
Sensor, Detectors	Internal and external monitoring of Fire/H2S/CH4, internal CO2
Airlock	With interlock system activated in emergency situation
Over pressure	50Pa in Muster area/Tech room/BB - 25Pa in Air-Lock

HVAC

Breathing Air system	2hours +20% with SIL-3 operation and manual override
HVAC system	With SIL-3 monitoring and shutdown
AC External	EX ATEX zone 2