

30 Men Central Control Room (CCR) H2S Protection Shelter



The complete package of H2S Shelter in Place (SIP) and HVAC equipment will be delivered and installed in a modular building at the Gas Plant. It will be used as the CCR with engineer's stations during normal operation and as a safety place for plant personnel during emergency mode operation for up to 30 people for 2 hours.

This SIP consists of 181*0.05m³ high-pressure cylinders and the system pressure is 30Mpa. A system compressor will fill the high-pressure cylinders when the quality of the external air is normal.

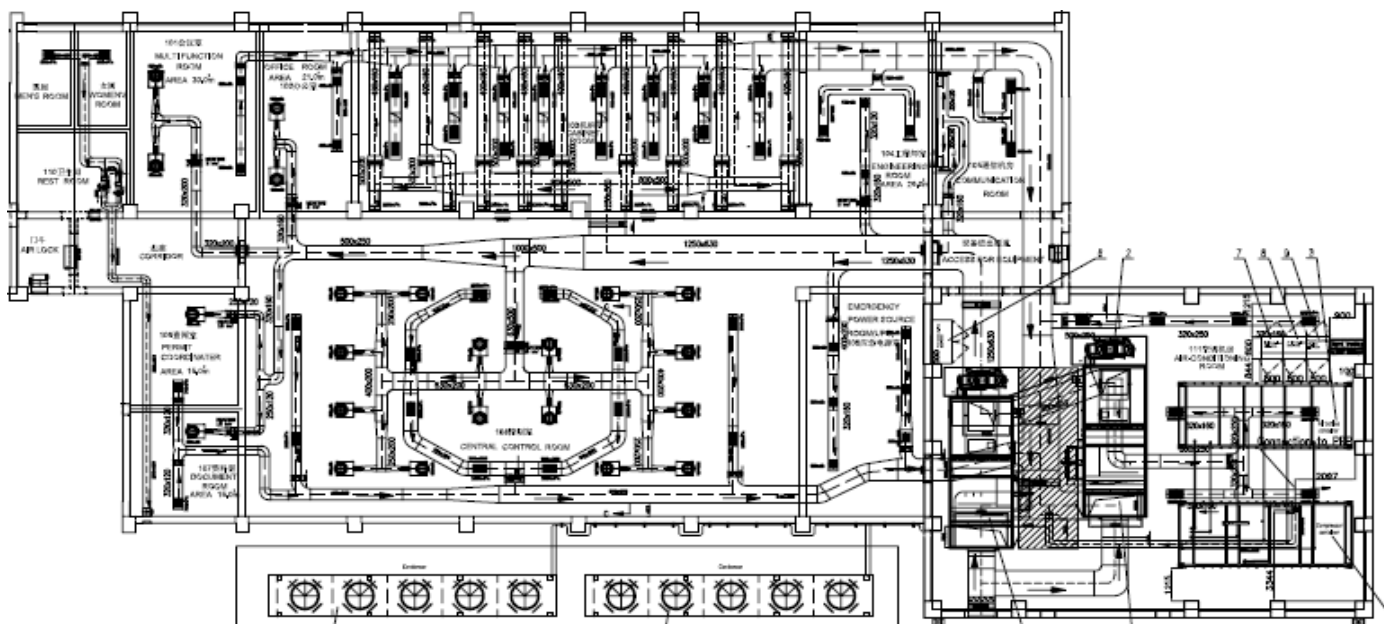
When the gas protection function is enabled, the high-pressure air would be depressed by depressurizing system and then fresh air would be supplied to the main room. A micro-positive pressure of 50pa would be kept in the main room and 25pa in the air-lock area. Due to the internal pressure in the SIP is slightly higher than the atmosphere pressure, the internal air will vent through the check valve and the hazardous gas will be blocked outside.



High Pressure Cylinder and Air Compressor System



HVAC system



Mobile CCR combined H2S shelter under fabrication

Specification

Central control room (shelter)	Size: 46,8 x 21,4 x 5,4 meters [L x W x H]
Bottle bank 2x20' containers	Size: 6,05 x 2,43 x 2,89 meters [L x W x H]
Over pressure	50 Pa in Control room and 25 Pa in Air-Lock
HVAC Unit External EX zone 2	250KW Cooling and ventilation system (Automatic backup system)
Sensor, Detectors	Signal from gas plant (Rockwell Redundant Control system and Honeywell ESD system)
F&G Control	Signal from gas plant (Rockwell Redundant Control system and Honeywell ESD system)
Operational Temperature	+45°C to -20°C

The above product was delivered to a client in China, but other configurations may be supplied upon your request.